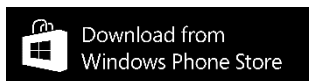


RWTHApp

From a requirements analysis to a service oriented architecture for secure mobile access to personalized data

Marius Politze, Bernd Decker



■ Requirements Analysis

- Process
- (Non)Functional Requirements

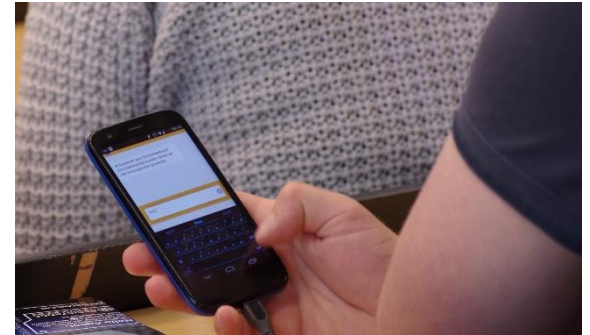
■ Architecture

- Existing Systems
- Security

■ Current State

- Statistics
- Lessons Learned

■ Future Work





~40,000 Students



~5,000 Internationals
from 117 Countries



~8,500 enrollments in
winter term 2013/14



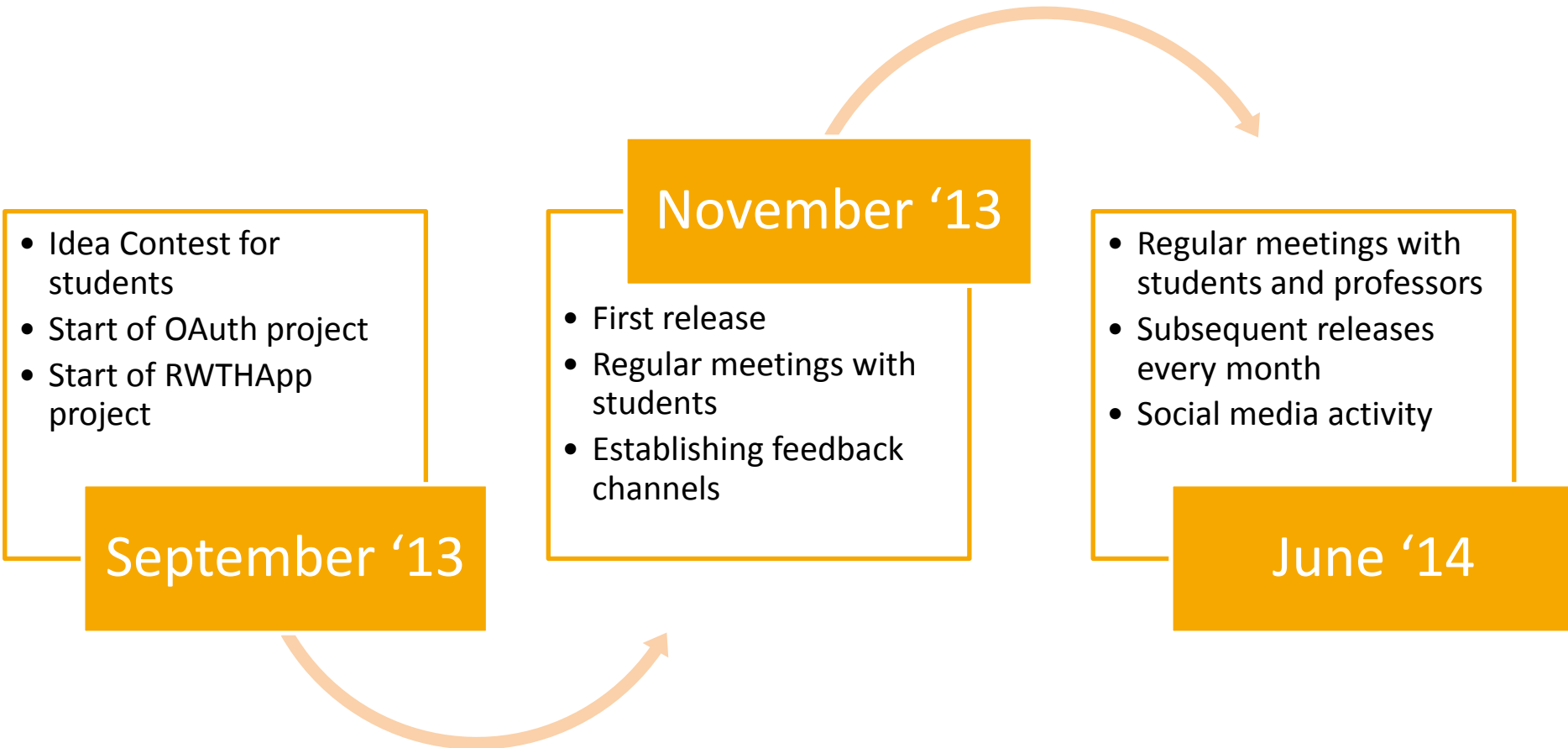
~500 Professors



~8,000 Employees



9 Faculties
115 Courses of study



- **Meet with students and Incorporate feedback**

- Changes, priorities, new features

- **Design and plan features**

- Agile, release planning and feature specification

- **Develop, implement and test**

- Feature driven development

- **Release new versions**

- Short release cycles ~4 weeks

- **Marketing: Get in touch with students**

- Collect feedback and announce new versions

- Blogs, Facebook



“The Swiss army knife to support the daily tasks of the students”

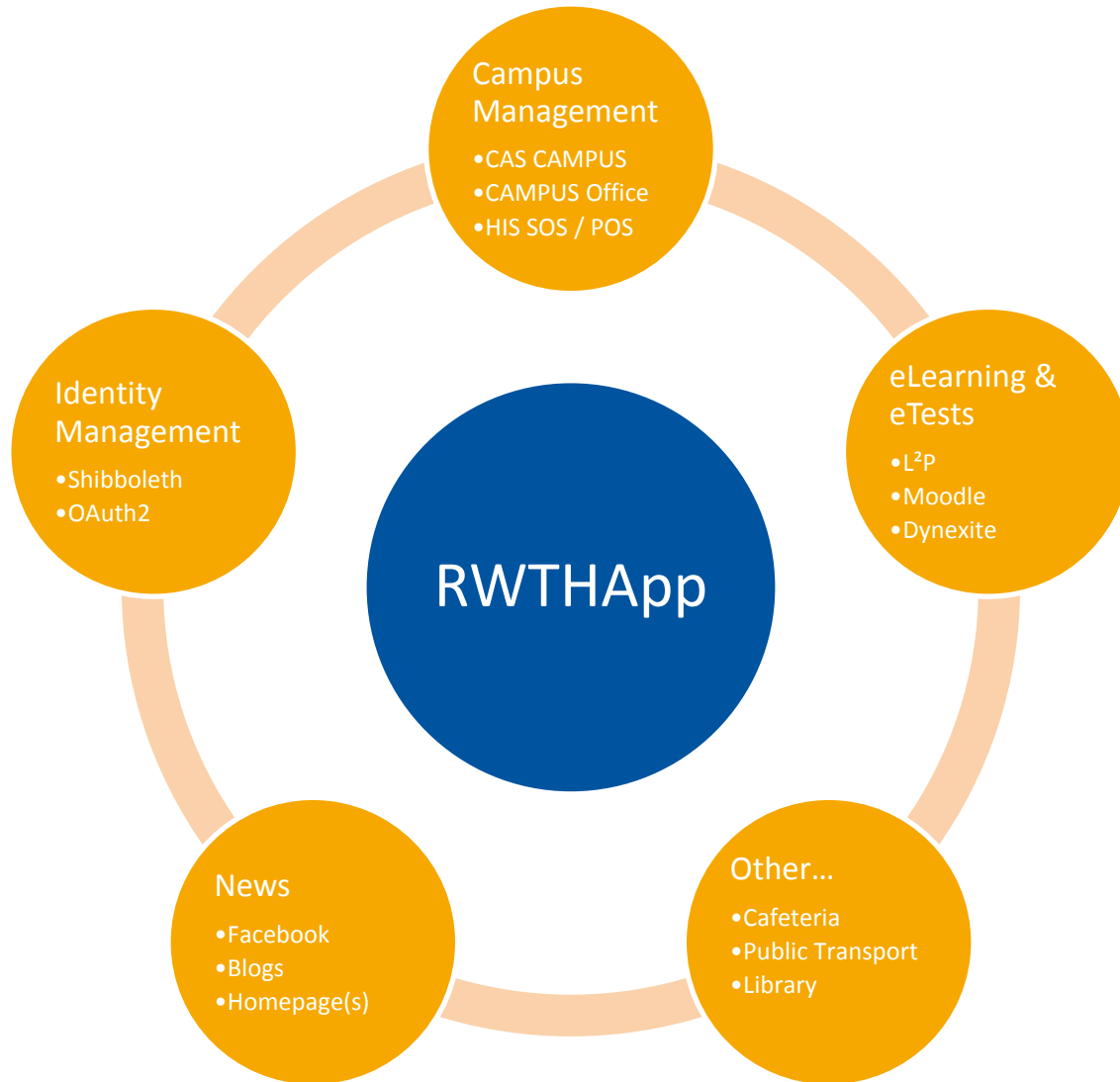
- **Contact to teachers and organizational units**
- **Live feedback during classes**
- **Lectures seminars and exams, dates, timetable, grades**
- **Room finder, campus map**
- **Campus Life: Cafeteria, public transportation, University sports**
- **Library: Literature search, Lent books and lending period**
- **Access to eLearning: Documents, Exercises, eTests, Discussions**
- **...**



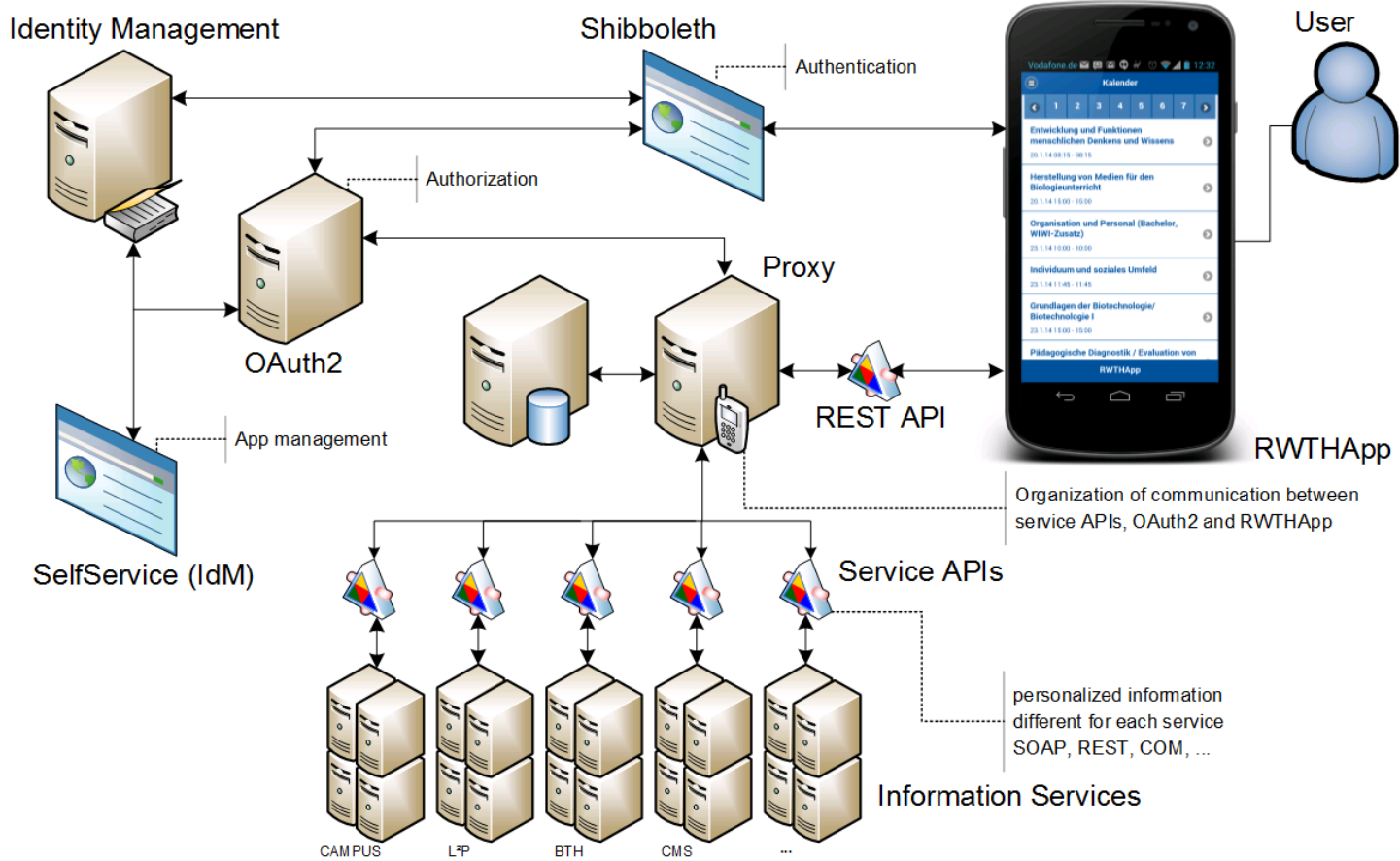
- **Cross Platform App (PhoneGap, HTML5 and JavaScript)**
 - Reduce platform specific coding
 - Available for Android, iOS and Windows Phone 8, Firefox OS,...
- **Secure Authentication and Authorization**
 - Encrypted Communication (SSL)
 - No credentials stored in the App: OAuth2
- **Use already available information**
 - No double data curation
- **Keep knowledge “in House”**
 - To use already available knowledge about existing systems
 - To react to changing requirements of the students



Source: <http://www.geekalerts.com/giant-swiss-army-knife/>



Architecture – App Proxy



■ Secure device based authorization using OAuth2

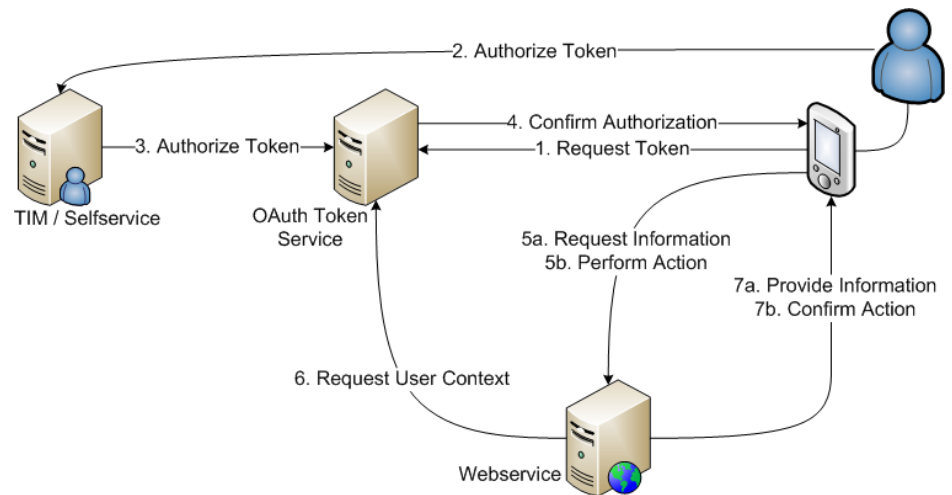
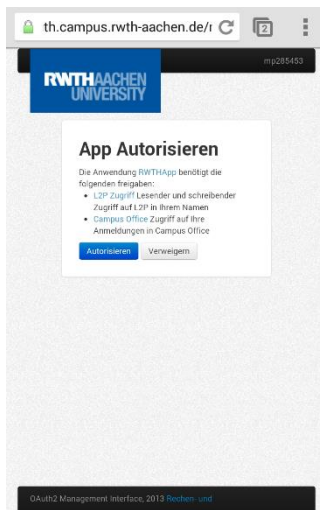
→ (De)Authorization through web interface

→ No passwords / credentials passed through the app

■ OAuth2 was established as a University Service

→ Integrated with Shibboleth to authenticate users

→ Possibility to extend as a federation service



v0.2 Release

- Adress book search
- Room finder

v0.4 Release

- Timetable
- News

v0.6 Release

- Directfeedback

v0.3 Release

- E-learning content

v0.5 Release

- Lecture Search
- E-Learning recent activities



Source: <http://www.victorinox.com/>

■ **Approx. 15,000 installations**

→ ~10000 Android

→ ~5000 iOS

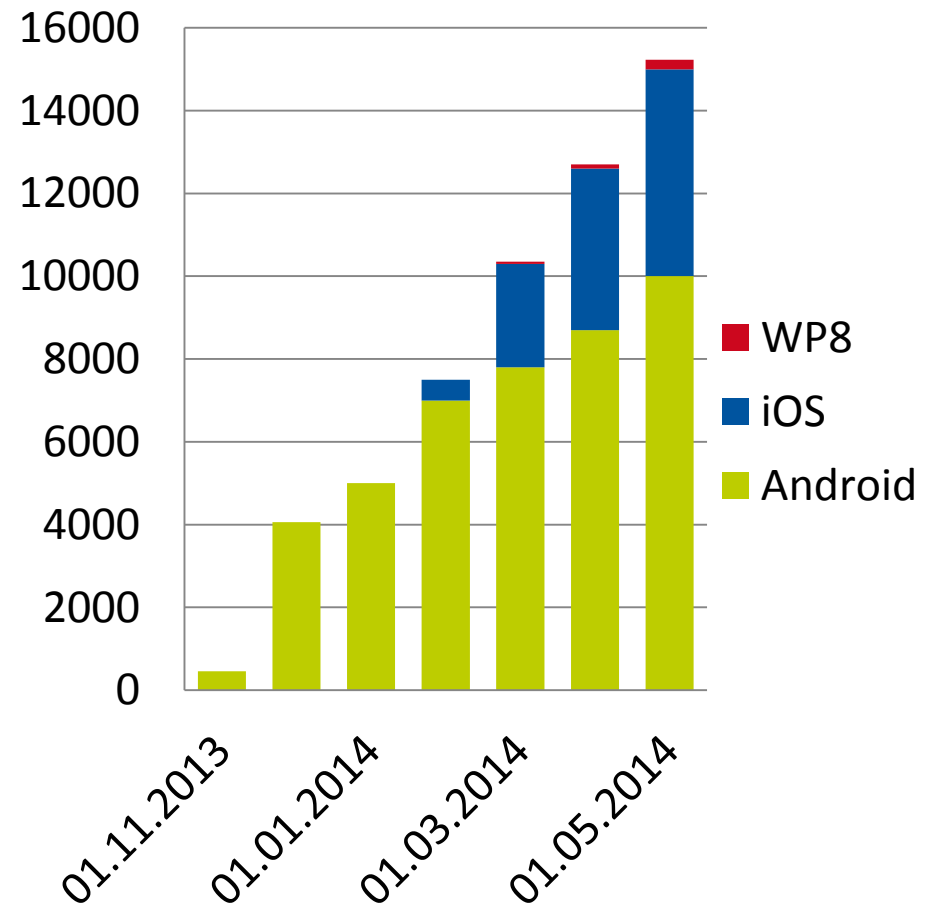
→ ~300 Windows Phone 8

■ **Avg. 40,000 requests per day**

■ **~ 16,000 lines of code**

■ **< 10 support requests / week**

Installations

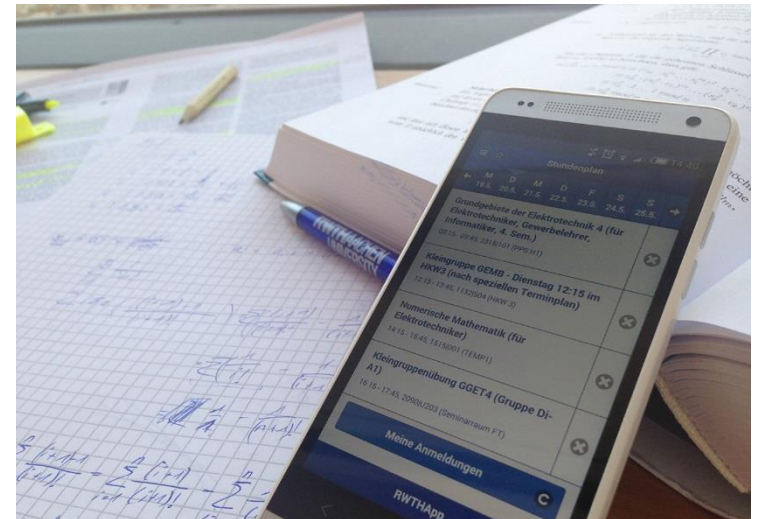


■ Students provided valuable input

- Feedback and meetings with students
- Business value based on the students needs

■ Platform Independent App

- Has some quirks
- Still some platform specific code and adaptations needed
- Can adopt fast to additional platforms (FirefoxOS is coming!)



■ Upcoming features

- Library, Cafeteria, Public transport, ...
- Student guide (guidelines, information, mentoring, counsellors, ...)

■ Enhancements

- Extend direct feedback
- Bettercaching mechanisms and performance

■ Software Engineering

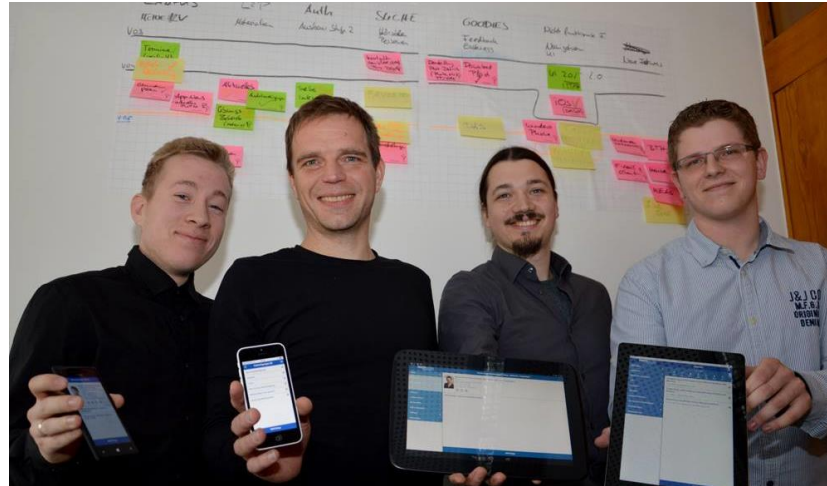
- Refine software engineering process
- More detailed reporting and statistics

■ Release APIs for students, institutes, 3rd parties ...

- RWTH Aachen app directory
- RWTH Aachen app guidelines



Source: <http://www.victorinox.com/>



Thank you for your attention!

Further information:

<http://www.itc.rwth-aachen.de>

politze@itc.rwth-aachen.de

decker@itc.rwth-aachen.de